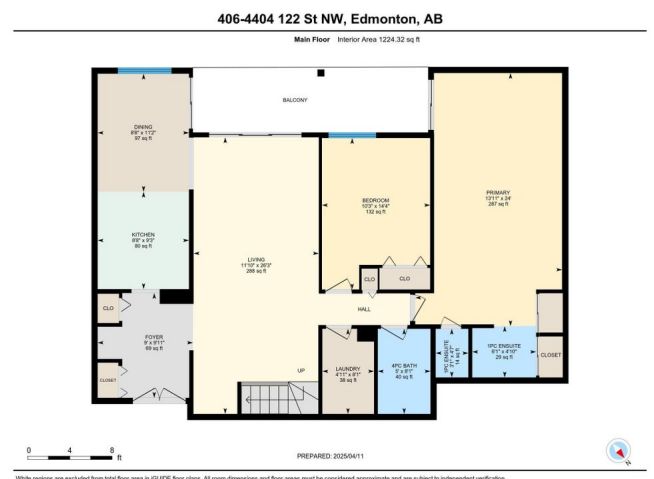


\$189,900 - 406 4404 122 Street, Edmonton

\$189,900

Aspen Gardens, Edmonton, AB



Essential Information

MLS® # E4430549

| | |
|-------|-----------|
| Price | \$189,900 |
|-------|-----------|

| | |
|----------------|------------------------|
| Bedrooms | 2 |
| Bathrooms | 2.00 |
| Full Baths | 1 |
| Half Baths | 2 |
| Square Footage | 1,621 |
| Acres | 0.00 |
| Year Built | 1976 |
| Type | Condo / Townhouse |
| Sub-Type | Lowrise Apartment |
| Style | Single Level Apartment |
| Status | Active |

Community Information

| | |
|-------------|---------------------|
| Address | 406 4404 122 Street |
| Area | Edmonton |
| Subdivision | Aspen Gardens |
| City | Edmonton |
| County | ALBERTA |
| Province | AB |
| Postal Code | T6J 4A9 |

Amenities

| | |
|----------------|---|
| Amenities | Exercise Room, Intercom, Parking-Visitor, Party Room, Pool-Indoor, Recreation Room/Centre, Secured Parking, Security Door, Television Connection, Vaulted Ceiling |
| Parking Spaces | 2 |
| Parking | Single Carport, Stall |
| Has Pool | Yes |

Interior

| | |
|-------------------|---|
| Interior Features | ensuite bathroom |
| Appliances | Dishwasher-Built-In, Microwave Hood Fan, Refrigerator, Stacked Washer/Dryer, Stove-Electric, Window Coverings |
| Heating | Hot Water, Natural Gas |
| # of Stories | 4 |
| Stories | 1 |
| Has Basement | Yes |
| Basement | None, No Basement |

Exterior

| | |
|-------------------|---|
| Exterior | Wood, Brick, Vinyl |
| Exterior Features | Fenced, Golf Nearby, Landscaped, Paved Lane, Picnic Area, Playground Nearby, Public Transportation, Schools, Shopping Nearby, Ski Hill Nearby |
| Roof | Asphalt Shingles |
| Construction | Wood, Brick, Vinyl |
| Foundation | Concrete Perimeter |

Additional Information

| | |
|----------------|------------------|
| Date Listed | April 11th, 2025 |
| Days on Market | 4 |
| Zoning | Zone 16 |
| Condo Fee | \$1,113 |

DATA IS DEEMED RELIABLE BUT IS NOT GUARANTEED ACCURATE BY THE REALTORS® ASSOCIATION OF EDMONTON. COPYRIGHT 2025 BY THE REALTORS® ASSOCIATION OF EDMONTON. ALL RIGHTS RESERVED. Trademarks are owned or controlled by the Canadian Real Estate Association (CREA) and identify real estate professionals who are members of CREA (REALTOR®, REALTORS®) and/or the quality of services they provide (MLS®, Multiple Listing Service®)

Listing information last updated on April 15th, 2025 at 10:32am MDT