

\$597,000 - N/A, Sherwood Park

MLS® #E4430492

\$597,000

3 Bedroom, 3.50 Bathroom, 2,007 sqft

Single Family on 0.00 Acres

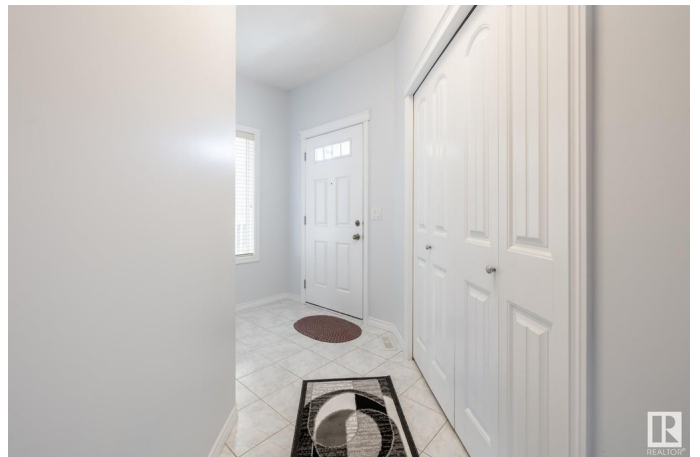
Emerald Hills, Sherwood Park, AB

Spacious 2008 sq ft 2 story home located just a few minutes walk from shopping and restaurants in Emerald Hills. Freshly painted, new carpet and new basement development. Kitchen features granite counter tops, stainless steel appliances and pantry. Open to eating area and living room with gas fireplace. Patio door out to backyard and deck. Main floor laundry with brand new washer/dryer and two piece guest bath. Primary bedroom has new vinyl plank flooring, spacious ensuite with double sinks, oversized shower, soaker tub and walk in closet. Two additional bedrooms on the upper level with main bath and bonus room with vaulted ceiling. Newly developed basement includes vinyl plank flooring, full bath, massive family room with space to put in an additional bedroom if needed and storage. Double attached garage is insulated with fresh paint. Great size backyard is fenced and just needs gates to completely enclose. Quick possession is available! Easy access out to Hwy 16.

Built in 2011

Essential Information

MLS® #	E4430492
Price	\$597,000
Bedrooms	3



Bathrooms	3.50
Full Baths	3
Half Baths	1
Square Footage	2,007
Acres	0.00
Year Built	2011
Type	Single Family
Sub-Type	Detached Single Family
Style	2 Storey
Status	Active

Community Information

Address	N/A
Area	Sherwood Park
Subdivision	Emerald Hills
City	Sherwood Park
County	ALBERTA
Province	AB
Postal Code	T8H 0L2

Amenities

Amenities	Deck
Parking	Double Garage Attached, Insulated

Interior

Interior Features	ensuite bathroom
Appliances	Dishwasher-Built-In, Dryer, Garage Control, Garage Opener, Refrigerator, Stove-Electric, Washer
Heating	Forced Air-1, Natural Gas
Fireplaces	Tile Surround
Stories	3
Has Basement	Yes
Basement	Full, Finished

Exterior

Exterior	Wood, Stone, Vinyl
Exterior Features	Fenced, Landscaped, Playground Nearby, Public Swimming Pool, Public Transportation, Schools, Shopping Nearby
Roof	Asphalt Shingles

Construction	Wood, Stone, Vinyl
Foundation	Concrete Perimeter

Additional Information

Date Listed	April 10th, 2025
Days on Market	8
Zoning	Zone 25

DATA IS DEEMED RELIABLE BUT IS NOT GUARANTEED ACCURATE BY THE REALTORS® ASSOCIATION OF EDMONTON. COPYRIGHT 2025 BY THE REALTORS® ASSOCIATION OF EDMONTON. ALL RIGHTS RESERVED.Trademarks are owned or controlled by the Canadian Real Estate Association (CREA) and identify real estate professionals who are members of CREA (REALTOR®, REALTORS®) and/or the quality of services they provide (MLS®, Multiple Listing Service®)

Listing information last updated on April 18th, 2025 at 8:32am MDT