

\$562,300 - 9833 68 Avenue, Edmonton

MLS® #E4429279

\$562,300

5 Bedroom, 2.00 Bathroom, 1,206 sqft
Single Family on 0.00 Acres

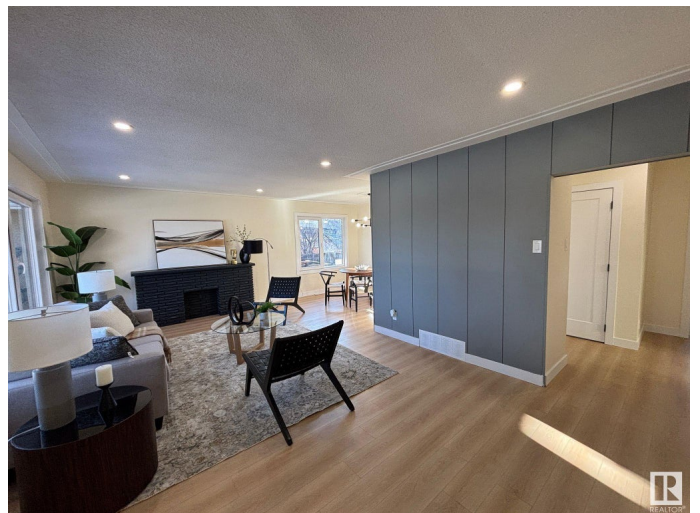
Hazeldean, Edmonton, AB

Steps from Mill Creek Ravineâ€™home to some of Edmontonâ€™s best trails! This fully renovated gem in Hazeldean offers 5 bedrooms, 2 full baths, and a separate entrance to a bright, modern in-law suite. Enjoy open-concept living with custom cabinetry, quartz counters, polished tile, pot lights, and upgraded stainless steel appliances. Natural light pours in through brand new German tilt & turn windows, garden-style accents, and oversized openings. The massive primary bedroom includes a walk-in-style closet, while the spacious living room is perfect for hosting. Additional upgrades are underway, including new exterior doors, porch upgrades, window screens, and more. Motivated seller is open to reasonable changes! Double detached garage and large fenced yard complete the package.

Built in 1956

Essential Information

MLS® #	E4429279
Price	\$562,300
Bedrooms	5
Bathrooms	2.00
Full Baths	2
Square Footage	1,206
Acres	0.00



Year Built	1956
Type	Single Family
Sub-Type	Detached Single Family
Style	Raised Bungalow
Status	Active

Community Information

Address	9833 68 Avenue
Area	Edmonton
Subdivision	Hazeldean
City	Edmonton
County	ALBERTA
Province	AB
Postal Code	T6E 0R4

Amenities

Amenities	See Remarks
Parking Spaces	4
Parking	Double Garage Detached

Interior

Appliances	Dryer, Garage Opener, Hood Fan, Washer, Refrigerators-Two, Stoves-Two
Heating	Forced Air-1, Natural Gas
Stories	2
Has Basement	Yes
Basement	Full, Finished

Exterior

Exterior	Wood, Stucco
Exterior Features	Back Lane, Fenced, Playground Nearby, Schools, Shopping Nearby, See Remarks
Roof	Asphalt Shingles
Construction	Wood, Stucco
Foundation	Concrete Perimeter

Additional Information

Date Listed	April 5th, 2025
Days on Market	11

Zoning

Zone 17

DATA IS DEEMED RELIABLE BUT IS NOT GUARANTEED ACCURATE BY THE REALTORS® ASSOCIATION OF EDMONTON. COPYRIGHT 2025 BY THE REALTORS® ASSOCIATION OF EDMONTON. ALL RIGHTS RESERVED. Trademarks are owned or controlled by the Canadian Real Estate Association (CREA) and identify real estate professionals who are members of CREA (REALTOR®, REALTORS®) and/or the quality of services they provide (MLS®, Multiple Listing Service®)

Listing information last updated on April 16th, 2025 at 3:32am MDT