

\$174,900 - 103 8125 110 Street, Edmonton

MLS® #E4428477

\$174,900

2 Bedroom, 1.50 Bathroom, 890 sqft
Condo / Townhouse on 0.00 Acres

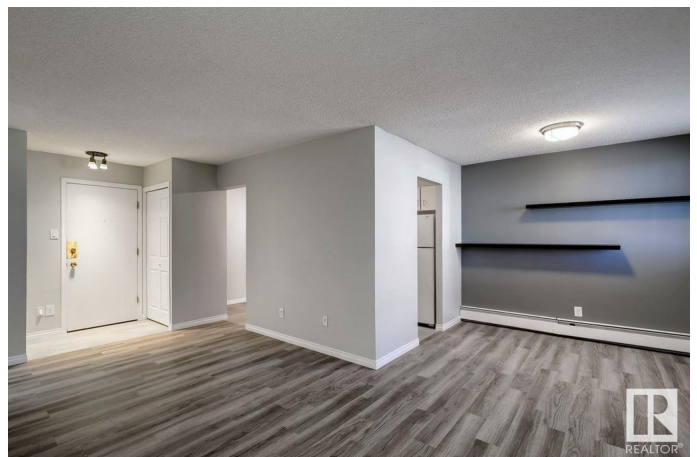
Garneau, Edmonton, AB

Welcome Garneau! This beautifully fully renovated 2 bedroom condo has everything you could possibly need! Located on the main floor of this 4 storey; allows for simple access. Window shutters provide an extra level of security, privacy and completely block out the sun when you're trying to sleep! The master bedroom has a walk-through closet and 2 piece ensuite. The 2nd bedroom is a good size with easy access to the main washroom. Picture of living/dinning room with furniture is virtually staged. There's a large storage room and in-suite laundry. Whether you work or attend the U of A or work at the Hospital, this location is perfect! You're close to grocery stores, Whyte Ave, parks, public transit and so much more!

Built in 1978

Essential Information

MLS® #	E4428477
Price	\$174,900
Bedrooms	2
Bathrooms	1.50
Full Baths	1
Half Baths	1
Square Footage	890
Acres	0.00



Year Built	1978
Type	Condo / Townhouse
Sub-Type	Lowrise Apartment
Style	Single Level Apartment
Status	Active

Community Information

Address	103 8125 110 Street
Area	Edmonton
Subdivision	Garneau
City	Edmonton
County	ALBERTA
Province	AB
Postal Code	T6G 2P3

Amenities

Amenities	No Animal Home, No Smoking Home, Parking-Visitor, Patio, Security Door, Storage-In-Suite, Television Connection, Vinyl Windows
Parking Spaces	1
Parking	Stall

Interior

Interior Features	ensuite bathroom
Appliances	Dishwasher-Built-In, Dryer, Refrigerator, Stove-Electric, Washer, Window Coverings
Heating	Baseboard, Hot Water, Natural Gas
# of Stories	4
Stories	1
Has Basement	Yes
Basement	None, No Basement

Exterior

Exterior	Wood, Vinyl
Exterior Features	Low Maintenance Landscape, Paved Lane, Picnic Area, Public Swimming Pool, Public Transportation, Schools, Shopping Nearby
Roof	Tar & Gravel
Construction	Wood, Vinyl
Foundation	Concrete Perimeter

Additional Information

Date Listed	April 1st, 2025
Days on Market	2
Zoning	Zone 15
Condo Fee	\$830

DATA IS DEEMED RELIABLE BUT IS NOT GUARANTEED ACCURATE BY THE REALTORS® ASSOCIATION OF EDMONTON. COPYRIGHT 2025 BY THE REALTORS® ASSOCIATION OF EDMONTON. ALL RIGHTS RESERVED. Trademarks are owned or controlled by the Canadian Real Estate Association (CREA) and identify real estate professionals who are members of CREA (REALTOR®, REALTORS®) and/or the quality of services they provide (MLS®, Multiple Listing Service®)

Listing information last updated on April 3rd, 2025 at 6:02pm MDT