

\$849,900 - 16 Eton Terrace, St. Albert

MLS® #E4422389

\$849,900

4 Bedroom, 3.50 Bathroom, 2,518 sqft

Single Family on 0.00 Acres

Erin Ridge, St. Albert, AB

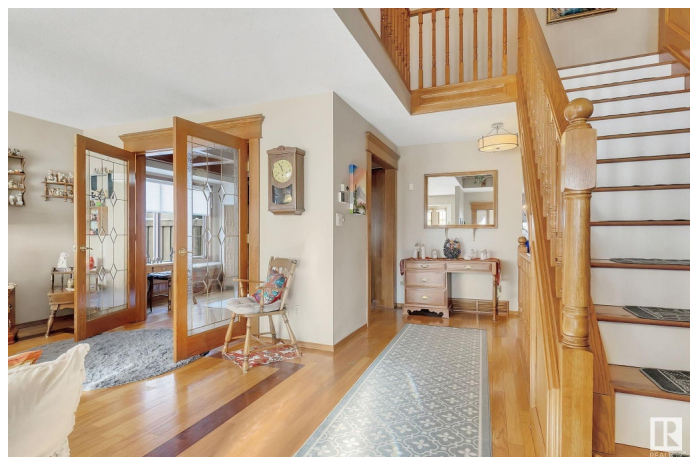
Welcome to this stunning Tudor-style, 2528 sq.ft, 4 bed, 4 bath home, on a MASSIVE lot in the heart of Erin Ridge! Youâ€™re greeted by magnificent curb appeal, large driveway & RV parking. The main level offers open design w/beautiful hardwood throughout. A chefâ€™s kitchen awaits, w/new high-end SS appliances, lighting & ceiling, leading into a large dining & entertainment area. Upstairs youâ€™ll find a large primary, w/dual closets & 5pc bath incl. jacuzzi tub. plus 2 beds, 4pc bath & laundry complete the 2nd floor. The FF basement offers a live-in suite w/separate entrance, kitchen (w/new fridge & stove), laundry w/new washer & dryer, large family area & 3pc bath. Live in comfort knowing you have 2 new furnaces & a/c unit (2022) & new roof (2018). On the wrap-around deck, youâ€™ll find a tastefully landscaped low yard w/new 8â€™x10â€™ shed & gazebo & a new three season sun room. Enjoy the new Swedish Spa located in back yard. The over-sized heated triple garage is furnished w/plenty of cabinets & storage.

Built in 1989

Essential Information

MLS® # E4422389

Price \$849,900



Bedrooms	4
Bathrooms	3.50
Full Baths	3
Half Baths	1
Square Footage	2,518
Acres	0.00
Year Built	1989
Type	Single Family
Sub-Type	Detached Single Family
Style	2 Storey
Status	Active

Community Information

Address	16 Eton Terrace
Area	St. Albert
Subdivision	Erin Ridge
City	St. Albert
County	ALBERTA
Province	AB
Postal Code	T8N 5K5

Amenities

Amenities	Air Conditioner, Deck, Gazebo, Sauna; Swirlpool; Steam, Sunroom, See Remarks
Parking	Triple Garage Attached

Interior

Interior Features	ensuite bathroom
Appliances	Air Conditioning-Central, Dishwasher-Built-In, Garage Control, Garage Opener, Garburator, Hood Fan, Microwave Hood Fan, Storage Shed, Window Coverings, See Remarks, Dryer-Two, Refrigerators-Two, Stoves-Two, Washers-Two
Heating	Forced Air-2, Natural Gas
Fireplace	Yes
Fireplaces	Mantel
Stories	3
Has Basement	Yes
Basement	Full, Finished

Exterior

Exterior	Wood, Brick
Exterior Features	Fenced, Fruit Trees/Shrubs, Golf Nearby, Landscaped, Public Transportation, Shopping Nearby, See Remarks
Roof	Asphalt Shingles
Construction	Wood, Brick
Foundation	Concrete Perimeter

Additional Information

Date Listed	February 21st, 2025
Days on Market	57
Zoning	Zone 24

DATA IS DEEMED RELIABLE BUT IS NOT GUARANTEED ACCURATE BY THE REALTORS® ASSOCIATION OF EDMONTON. COPYRIGHT 2025 BY THE REALTORS® ASSOCIATION OF EDMONTON. ALL RIGHTS RESERVED.Trademarks are owned or controlled by the Canadian Real Estate Association (CREA) and identify real estate professionals who are members of CREA (REALTOR®, REALTORS®) and/or the quality of services they provide (MLS®, Multiple Listing Service®)

Listing information last updated on April 19th, 2025 at 9:32am MDT