

Courtesy Of Wendi Darling Of Century 21 Masters

# \$529,900 - 81 Silverstone Drive, Stony Plain

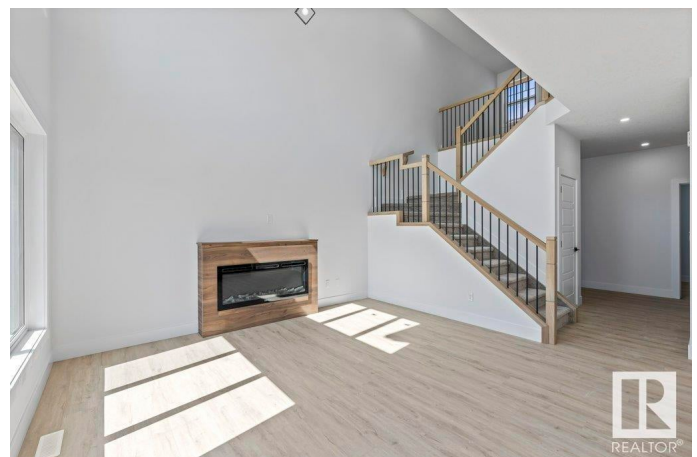
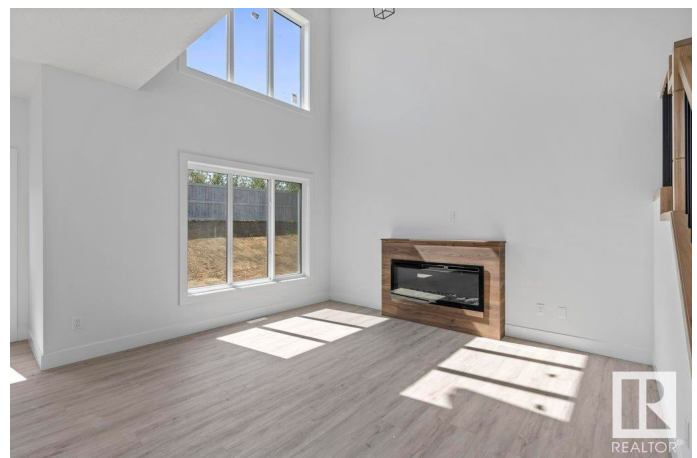
MLS® #E4401829

**\$529,900**

3 Bedroom, 3.50 Bathroom, 1,911 sqft  
Single Family on 0.00 Acres

Silverstone, Stony Plain, AB

Incredible time to get involved in the building process and have a say in the final interior design choices! This 3 Bed two story home will be ready for it's new owner in the spring! South facing yard, double attached garage, walk through pantry, wooden closet organizers, even 9' ceilings on all floors. Sidhu Homes is a LUXURY builder specializing in high end custom homes and is now offering entry level family homes maintaining the high end specification!! Granite or quartz countertops, electric fireplace, large bedrooms, and two primary suites! The charming community of Silverstone has the amenities of the big city as well as fantastic trails and small town feel. This models spec is 2007square feet , has upstairs laundry, main floor Den, Bonus Room, W/I Closet, separate exterior entrance, soaring 18' reveal at entry, and the opportunity to individualize the interior paint/material. Our team is happy to work with you to make sure it's your perfect HOME!



Built in 2024

## Essential Information

MLS® #	E4401829
Price	\$529,900
Bedrooms	3

Bathrooms	3.50
Full Baths	3
Half Baths	1
Square Footage	1,911
Acres	0.00
Year Built	2024
Type	Single Family
Sub-Type	Detached Single Family
Style	2 Storey
Status	Active

### **Community Information**

Address	81 Silverstone Drive
Area	Stony Plain
Subdivision	Silverstone
City	Stony Plain
County	ALBERTA
Province	AB
Postal Code	T7Y 0E8

### **Amenities**

Amenities	Ceiling 9 ft., Closet Organizers, No Animal Home, No Smoking Home, See Remarks, HRV System, Natural Gas BBQ Hookup, 9 ft. Basement Ceiling
Parking Spaces	4
Parking	Double Garage Attached

### **Interior**

Interior Features	ensuite bathroom
Appliances	Appliances Negotiable, Dishwasher-Built-In, Dryer, Garage Control, Garage Opener, Microwave Hood Fan, Refrigerator, Stove-Electric, Washer
Heating	Forced Air-1, Natural Gas
Fireplace	Yes
Fireplaces	Remote Control
Stories	2
Has Basement	Yes
Basement	Full, Unfinished

### **Exterior**

Exterior	Wood, Stone, Vinyl
Exterior Features	Playground Nearby, Schools, See Remarks
Roof	Asphalt Shingles
Construction	Wood, Stone, Vinyl
Foundation	Concrete Perimeter

### **School Information**

Elementary	Ecole Meridian Heights Sch
Middle	Westview School
High	Connections For Learning

### **Additional Information**

Date Listed	August 13th, 2024
Days on Market	248
Zoning	Zone 91

DATA IS DEEMED RELIABLE BUT IS NOT GUARANTEED ACCURATE BY THE REALTORS® ASSOCIATION OF EDMONTON. COPYRIGHT 2025 BY THE REALTORS® ASSOCIATION OF EDMONTON. ALL RIGHTS RESERVED. Trademarks are owned or controlled by the Canadian Real Estate Association (CREA) and identify real estate professionals who are members of CREA (REALTOR®, REALTORS®) and/or the quality of services they provide (MLS®, Multiple Listing Service®)

Listing information last updated on April 18th, 2025 at 10:17am MDT